

ESGVJCC

newsette

VOL #14 | ISSUE #6 | NOVEMBER 2025

NEXT ISSUE: DECEMBER 2025

ESGVJCC

UPDATE ON MEMBERSHIP FEES

Important Update on Membership Fees for New & Renewing Members

Starting November 2025



EAST SAN GABRIEL VALLEY
JAPANESE COMMUNITY CENTER **ESGVJCC**

IN THIS ISSUE

- 3 LIVING WITH MOYAMOYA
- 5 KUAS INTERNS
- 7 KONDO WEALTH ADVISORS
- 9 FALL FESTIVAL RECAP

Submitted by Mary Nagakawa, Marketing Coordinator

As we approach membership renewal season, we want to take a moment to thank you for being such an important part of the ESGVJCC family. Your membership, participation, and support are what keep our Center thriving—bringing people together through culture, friendship, and shared experiences.

After more than 20 years of keeping our membership fees the same, we've reached a point where a small adjustment is needed to help us continue growing and serving our community with care. Beginning November 1, 2025, our membership rates will increase slightly. This decision was made with great thought and consideration. We understand that any increase can be challenging, but this change will allow us to maintain the quality of our programs, services, and events that mean so much to all of us.

New Membership Rates on esgvjcc.org/join (effective November 1, 2025):

- Individual Membership: \$45 (new members) / \$55 (renewal)
- Family Membership: \$65 (new members) / \$85 (renewal)
- Senior Membership: \$40 (new members) / \$50 (renewal)

Memberships renewed this November will be valid through the end of 2026. When renewing or signing up online, please remember to uncheck the box on eTapestry during checkout to avoid additional processing fees. We truly appreciate your understanding and continued support. Your membership helps us carry forward our mission of bridging culture, family, and community—values that remain at the heart of everything we do. Thank you again for being such an essential part of our community. We're deeply grateful for your support and can't wait to share another wonderful year with you, especially as we celebrate our 75th anniversary together in 2026!

If you have any questions or would like more information, please don't hesitate to reach out to our Executive Director, Pearl Omiya at pomiya@esgvjcc.org. ■

2025 ESGVJCC

BOARD OF DIRECTORS

President

Tim Itatani

Co-Vice President

Karen Ogawa

Co-Vice President

Grace Richardson

Co-Vice President

Richard Sato

Secretary

Denise Akune

Treasurer

AJ Kamimura

Parliamentarian

Phillip Komai

MEMBERS

Joanne Dodson

Jim Friesen

Keith Inatomi

Grant Iwata

Joy Kitaura

Susie Kozono

Lauren Kinkade-Wong

Michi Lew

Iso Nakasato

Kim Nakashima

Wesley Nobuta

Michelle Okawa

Barbara Shirota

Kiyomi Takemoto

Dave Yamahata

STAFF

Executive Director

Pearl Omiya

Executive Assistant

Tina Asano

Program Director, Youth Services

Melissa Kozono

Marketing Coordinator

Mary Nagakawa

Office Manager

Scott Kawachi

Events/Programs Coordinator

Katrina Que

Events/Programs Coordinator

Bryce Middo

MESSAGE FROM THE ESGVJCC TIM ITATANI, 2025 ESGVJCC PRESIDENT

Dear Members:

It's hard to believe it's already November 2025! Where has the year gone? It feels like just yesterday we were gathering with family and friends to celebrate New Year's Day. I hope I'm not the only one who feels like this year has flown by!

By the time you read this message, our new patio should be fully installed. Its purpose is simple: to provide a welcoming space where our members, their families, and guests can gather, socialize, or just hang out. The patio features permanent shade, lighting, fans, tables, and chairs—everything needed to stay comfortable while waiting for a class, practice, or simply enjoying time at the Center. I even tried to include TV monitors... but someone told me no (LOL).



EAST SAN GABRIEL VALLEY JAPANESE COMMUNITY CENTER

Looking ahead, 2026 will mark ESGVJCC's 75th Anniversary! We've already created a special anniversary logo (see attached) and are planning a big, informal celebration in June 2026 to commemorate this incredible milestone.

Looking ahead, 2026 will mark ESGVJCC's 75th Anniversary! We've already created a special anniversary logo (see attached) and are planning a big, informal celebration in June 2026 to commemorate this incredible milestone. Once the official 2026 schedule is released, please save the date—we want to make it a celebration to remember!

As I wrap up my seventh term as President of the Board of Directors, I want to sincerely thank each and every one of you. Your dedication and commitment have made ESGVJCC not only a successful operation but also a truly fun and meaningful place to be. You've all inspired me, and your support continues to motivate our vision and plans for the future.

Sincerely,

Tim T. Itatani
President, ESGVJCC Board of Directors

ESGVJCC PROGRAMS

LIVING WITH MOYAMOYA: MY STORY



Submitted by Jenny Hirata, Kishin Daiko Member

The first time I heard of Moyamoya, it was tied to my own diagnosis. I had no idea of the impact it would have on my life.

Hi, I'm Jenny Hirata, and I was a performing member of Kishin Daiko. I cherished being part of a community that shared my love for taiko. I'd like to take a moment to share my story with Moyamoya and hopefully, to raise public awareness so that others facing it know they're not alone.

Moyamoya is a rare brain disease that narrows the arteries and greatly increases the risk of stroke. On scans, the arteries resemble a "puff of smoke"—which is where the Japanese word comes from.

Summer of 2024, I'd just finished celebrating my 38th birthday in Hawai'i. I began noticing concerning symptoms of numbness in my hand and spasms in my leg. Even before, I would get lightheaded after exerting myself during taiko performances—something I brushed off as exhaustion.

My vacation soon gave way to endless ER visits and multiple MRIs. After undergoing surgery to improve circulation in my brain, I suffered a mini stroke. It was then, I realized my love of taiko had to be put on hold.

My battle is far from over. Today, I continue to be monitored by my neurosurgeon, as well as regular visits to physical and occupational therapists. Adjusting to this new reality hasn't been easy, but I'm extremely grateful to be here.

If you'd like to learn more, visit World Moyamoya Alliance (moyamoya.org) or National Institute of Neurological Disorders and Stroke (ninds.nih.gov). ■



ESGVJCC PROGRAMS

APPLY FOR 2025 WINTER CAMP CHIBIKKO

Submitted by Melissa Kozono, Program Director

This year, we are excited to announce that Winter Camp Chibikko will be returning this December from December 29-30 at the ESGVJCC! This winter, the theme will be Oshogatsu (Japanese New Year) and celebrating the Year of the Horse!

Applications are available on the ESGVJCC website only. Space is limited so please register today at www.esgvjcc.org/youth-programs.

For more information, please contact Program Director of Youth Services, Melissa Kozono at mkozono@esgvjcc.org.

We look forward to seeing all of our campers this winter! ■

2025 EVENTS

FEBRUARY 8

INSTALLATION BANQUET

Celebrate all of our accomplishments of 2024 and as we install the 2025 Board of Directors.

APRIL 6

SPRING CLEAN-UP

Join us for painting, cleaning our facilities, and other various maintenance around the ESGVJCC!

APRIL 26

CHERRY BLOSSOM FESTIVAL

ESGVJCC showcases and promotes the Japanese culture with cultural performances.

MAY 31

HEALTH FAIR

A free, public health fair for the community—screenings, resource fair, and more.

JUNE 28

WCBT OBON

West Covina Buddhist Temple's annual festival honoring the spirits of our ancestors and loved ones.

JULY 14-18

MEMBER APPRECIATION WEEK

A week to recognize and celebrate ESGVJCC Members.

SEPTEMBER 14

KEIRO NO HI

A celebratory day for our seniors who continue to be the foundation of the ESGVJCC.

OCTOBER 6

AKIMATSURI GOLF TOURNAMENT

Fundraiser event: Golfers! Come support the ESGVJCC!

OCTOBER 11

AKIMATSURI FESTIVAL

ESGVJCC showcases its organizations with vivid exhibits, exciting performances, and delicious food!

OCTOBER 17

TRUNK OR TREAT/BOOK FAIR

Family fun event with trick or treating, crafts, games, and food!



SOUTHERN CALIFORNIA EDISON SUPPORTS ESGVJCC

The ESGVJCC was awarded \$5,000 to distribute information to our membership on wildfire safety. Throughout the year, you will see SCE articles, social media posts, and various information distributed at events. ■



FASTER GRID PROTECTION SETTINGS IN HIGH FIRE RISK AREAS

Utilities use protection settings on protective devices across the entire electric system to maintain the reliability of power and prevent damage to equipment caused by an electrical disruption or fault, such as a tree branch falling on a power line. This is done by detecting the fault and then isolating the impacted area so that the remaining system operates normally and fewer customers are impacted by an outage. Examples of protective devices include relay and circuit breakers at substations and remote-controlled automatic reclosers and fuses on distribution lines.



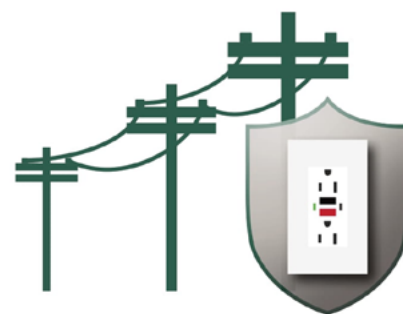
WHAT ARE FASTER GRID PROTECTION SETTINGS?

Faster grid protection settings reduce the response time of protective devices when an issue is detected.

Protective devices can act like ground fault circuit interrupter (GFCI) outlets found in home wiring systems. GFCI outlets in the home detect and automatically turn off power when they detect a hazard, such as a malfunctioning kitchen appliance or hair dryer.

Similarly, faster grid protection settings in Southern California Edison's high fire risk areas act more quickly during hazardous scenarios like tree branches or windblown debris that can get into power lines and reduces the risk of an ignition.

Protection settings are similar to ground fault circuit interrupter (GFCI) outlets in high-risk areas at home, such as kitchens and bathrooms



Updated: 11/21/2022

AUTOMATIC MEMBERSHIP RENEWAL

If you would like to have your ESGVJCC Membership automatically renewed, please contact Pearl Omiya at pomiya@esgvjcc.org or visit esgvjcc.org and fill out the Recurring Credit Card Payment Authorization form.

ESGVJCC PARTNERSHIPS

SCE'S FINANCIAL ASSISTANCE PROGRAMS

Submitted by Mary Nagakawa, Marketing Coordinator

As one of Southern California Edison's community outreach partners, the ESGVJCC helps share important information regarding billing updates and programs to help save money.

The information and resources that we share will not only be available in English, but also translated into Japanese to reach more people in the community, especially ours! Resources in English and Japanese can be found on our website at esgvjcc.org/partnerships.

SCE understands that many customers continue to struggle financially, and that sometimes other expenses must come first. Their California Alternate Rates for Energy (CARE) and Family Electric Rate Assistance (FERA) financial assistance programs can help qualifying families of all sizes lower their monthly energy bills when they need it most.

With CARE, qualifying households can receive 32.5% off their electric bills. With FERA, qualifying households receive an 18% discount on their electric bills.

HELP PAYING YOUR BILL

CARE & FERA Can Reduce Your Monthly Bills

Learn more about CARE/FERA—our bill assistance programs for income-qualified customers.




SCE's Energy Savings Assistance (ESA) program is also designed to help customers conserve energy and save money. Income-qualified customers may be eligible to receive energy-efficient appliances at no charge or a minimal charge. If you qualify, we'll cover the costs of new energy-efficient appliances—including installation.

ENERGY SAVINGS ASSISTANCE PROGRAM

ARE YOU ELIGIBLE FOR FREE APPLIANCES?

Income-qualified customers may be eligible to receive appliances at no charge or a minimal charge.



Learn more about these programs and find Japanese versions of these infographics on our website at esgvjcc.org/partnerships. ■

ESGVJCC STAFF

2025 INTERNS FROM KYOTO UNIVERSITY OF ADVANCED SCIENCE

Submitted by Mary Nagakawa, Marketing Coordinator

At the end of August, we welcomed Sachi and Tadanori from Kyoto University of Advanced Science to the ESGVJCC!

Sachi is a student of the Department of Business Administration, and this was her first time traveling abroad. Tadanori is a student of the Department of Economics, and he is a well-seasoned traveler. Both were eager to improve their English-language skills and experience culture in the U.S.



During their two-week stay in Los Angeles, they got a hands-on look at what it's like to work at the ESGVJCC. From assisting with our senior and after-school programs to connecting across generations, they truly embraced every opportunity to learn and contribute.

Outside of their internship, they made the most of their time in LA—catching Dodgers and LA Sparks games, trying a bunch of different food, going bowling with our staff, and even running with a local run club (way to go, Tadanori!).



We're grateful to everyone who helped make their visit a safe and memorable one. Thank you to our Executive Director, Pearl Omiya, and her family for hosting Sachi and Tadanori in their home. Thank you to Tim and Sandy Itatani, Tina Asano and Denise Akune, and Harmony and Melody Ogino for showing them the best of LA. Lastly, thank you to all our staff and members for making them feel welcome at the ESGVJCC everyday! ■

ESGVJCC EVENTS

2025 KEIRO NO HI

Submitted by Mary Nagakawa, Marketing Coordinator

Thank you to everyone who supported this year's Keiro no Hi event to celebrate the older adults of our community! This year we celebrated 56 senior members and served over 80 bentos. It was wonderful to hear that many of you enjoyed the bentos that were lovingly prepared by Chef Ryo Sato and his amazing team and the box of homemade desserts baked by Denise Akune, Meri Asano, Nancy Kudo-Hombo, Joy Kitaura and Jean Nakatani.



This event would not have been possible without the help of sponsors. Your support allowed us to provide each older adult over 75 years of age with a free bento, box of desserts, and a small gift. Thank you to the following sponsors!

Title Sponsors - \$1,000

Phillip Komai

Foundation Sponsors - \$250

ESGVJCC Leisure Club

Respect Sponsors - \$100

Grace Richardson

Fumi Yonemoto & Hiroshi Yonemoto



Most of all, we're thankful for our seniors members themselves. We hope this small gesture shows how much you are cherished by the ESGVJCC! ■

ESGVJCC EVENTS

2025 TRUNK OR TREAT

Submitted by Mary Nagakawa, Marketing Coordinator

Thank you to everyone who joined us for our Trunk or Treat event in October! This year, we celebrated a little earlier in the month so everyone could enjoy the many other Halloween events happening throughout our community and local school districts.



Trunk or Treat also happened to fall on my birthday this year, which made the day even more special. It was such a treat to see all the adorable costumes! Every trunk was a winner in my eyes, but my personal favorites were the Dragon Ball and Peanuts-themed cars.



This was one of our best Trunk or Treats yet, thanks to all the families who decorated their trunks and everyone who came out to trick-or-treat and celebrate together. We hope you discovered a new favorite book at the Scholastic Book Fair and enjoyed the food, activities, and time spent with fellow ESGVJCC members. Thank you to Gochu Gang for returning to join us for another event, and to everyone who helped create such a spooky, festive atmosphere for our trick-or-treaters.

Be sure to check out all the photos from Trunk or Treat on our Facebook page! ■

ESGVJCC EVENTS

2025 AKIMATSURI GOLF TOURNAMENT

Submitted by Mary Nagakawa, Marketing Coordinator

In early October, we enjoyed another beautiful day at Via Verde Country Club in San Dimas for the 27th Annual Akimatsuri Golf Tournament. The weather was perfect, and golfers were treated to delicious snacks and drinks as they made their way through the course. Upon arrival, each golfer received a snack bag and a generous goodie bag filled with even more treats and fun freebies to kick off the day.



Throughout the course, golfers were welcomed at several specialty holes offering unique refreshments and experiences. At Hole 1, players enjoyed a hearty serving of chili rice from Cherrystone's paired with soft King's Hawaiian Rolls and freshly made mochi from Fugetsu-do. At Hole 13, a refreshing bowl of soba was served, and golfers had the chance to pay to take a sake shot with our Executive Director Pearl Omiya. Later in the course, at our ever-popular Marshmallow Hole, Events and Programs Coordinator Bryce Middo—who also organized this year's tournament—served Hello Kitty rice crackers and samples of Sake, adding a festive touch. Another highlight was our classic edamame and smoothie station, a healthy and energizing stop that was needed as the sun came out!

The tournament concluded with a lively banquet dinner, where we celebrated the day's winning golfers and announced the winners of our raffle and silent auction. The evening was a fitting close to a day full of fun, food, and community spirit.

We extend our deepest thanks to everyone who supported this year's tournament—our players, donors, volunteers, ESGVJCC staff, and especially our generous Diamond, Platinum, and Titanium sponsors.

This year's sponsors included:

Diamond Sponsors - \$3,000

The Hatakeyama Family
Glenn Nakatani, A Professional Law Corporation
The Shirota, Yanase & Arnheim Families
The Sugimoto Family Foundation—George, Ruri, Lisa, and Nathan Thomas Umemoto

Platinum Sponsors - \$2,000

Tim and Sandy Itatani

Titanium Sponsors - \$1,000

Japanese American Community Credit Union



We are incredibly grateful for everyone's continued generosity and support! Your time, dedication, and support helped make this annual fundraiser a success and we were able to raise over \$45,000!

Be sure to check out our Digital Program to see the full list of supporters and donors who made the event possible on esgvjcc.org/2025-akimatsuri-golf-tournament, and don't miss the photo highlights on our Facebook page. ■

PROGRAM HIGHLIGHTS

Ballroom Class



Weekly | Sugimoto Family Social Hall
Interested in learning different styles of dance such as the Cha Cha, American Waltz, or Tango? Join the Ballroom Class every Friday evening at 7pm and 8pm. No partner is necessary and all levels of experience are welcome. One class is \$10, and both classes are \$15. To learn more or sign up, please call Lee Ezaki at (626) 533-8359.

2025 Winter Camp Chibikko



Annual | ESGVJCC

Our fifth Winter Camp Chibikko returns to the ESGVJCC on December 29-30! Enjoy your winter vacation and start the new year off right with us at camp! Learn more and register online at esgvjcc.org/youth-programs. For any questions, please contact Program Director Melissa Kozono at mkozono@esgvjcc.org!

Kendo



Weekly | ESGVJCC Social Hall & Gym Kendo is the modern Japanese martial art of sword fighting based on traditional samurai swordsmanship. Learn with Covina Kendo Dojo, one of the oldest and largest schools of kendo here in the United States!

KONDO WEALTH ADVISORS

GLAD AND SAD PARABLE

Submitted by Akemi Dalvi, CPA/PFS, CFP

There is a story of a group of young men in a far-off land who sincerely wished to become wealthy. Accordingly, they traveled deep into the woods to visit an ancient hermit who was said to have mastered the mysteries of magic.

"Oh wise one," they said, "Tell us what we must do to gain wealth and financial prosperity."

The answer was disappointing: "You must work all your lives to make the lives of others better in some way, and you will be rewarded for your labors."

"But," the young men asked, "Isn't there anything else you can tell us to do, beyond this simple thing?"

"If you wish to enhance and accelerate your wealth, there is one more thing," said the wise man cautiously. "But I warn you in advance that if you heed my advice, you will be both sad and glad."

"Tell us," the young men said eagerly, unconcerned about the warning, as young people often are.

"Go down to the stream and gather stones," the old man advised them. "Put them in your pocket and keep them there, and twice, I tell you, you will be glad and sad."

The young men scratched their heads and walked away. Their travels back to the village took them past a stream, where there were many stones of all sizes and shapes.

Some of the young men were skeptical of the wise one's advice, and put a few pebbles in their pockets. Others gathered more, and one, who trusted the wisdom of the man who had mastered the mysteries of magic, loaded his pockets, and led the others home.

Over the course of the next year, each of the young men found ways to improve the lives of the people in the village. The work was hard, but they found it rewarding. They nearly forgot the stones, until one day, a stone happened to fall out of the pocket of one of the young men, and it gleamed in the sunlight. Intrigued, he lifted it up to the sun, and behold! It had become pure silver.

The young man brought the silver stone to his friends, and each of them emptied their pockets, and discovered that they now possessed silver nuggets. All of them were glad for their good fortune, but also sad—some more than others—that they hadn't paid closer attention to the old man's words.

The young men celebrated in the village, spending some of their wealth on luxuries and strong drinks, toasting the old man for his magic. Those who had gathered a few rocks in the stream left the celebration with empty pockets, while others still kept some of the silver nuggets with them, and one of them left the village with his pockets still mostly filled with silver.

Years passed and once again, a stone fell out of a pocket. Lo and behold, the silver nugget had turned to gold! When the young men conferred again, those who had kept some of their rocks discovered that their pockets now contained gold nuggets, some more than others, and once again, they were glad at their newfound wealth, and sad that they had spent some of their silver when they could have waited and become more wealthy.

"The old man was right," one of them said with wonder. "Twice now, we have been glad and sad."

Once again, there was a celebration. Only, one of the young men declined to participate in the festivities. Naturally, his companions inquired why, but he simply shook his head and smiled.

Many years later, someone asked this man, now an elder in the community, why he held back from celebrating his good fortune. By way of answer, he pulled a diamond out of his pocket, held it up to the sun, and replied, "I wanted to see what it would be like to be glad, without also being sad."

This simple parable is an allegory about the benefits of long-term investing, the power of compound growth, and the regret that comes from failing to take full advantage of investment opportunities. The story suggests that the best returns come from patience and discipline, while quick gratification leads to long-term disappointment. Consider reaching out to your Certified Financial Planner™ or CPA Personal Financial Specialist (PFS) for practical applications we can implement today to prepare for the future.

The opinions expressed above are solely those of Kondo Wealth Advisors, Inc., (626-449-7783 info@kondowealthadvisors.com) a Registered Investment Advisor in the state of California. Neither Kondo Wealth Advisors, Inc. nor its representatives provide legal, tax or accounting advice.

Sources:

Source: Bob Veres Insider Information

ESGVJCC EVENTS

2025 AKIMATSURI FALL FESTIVAL

Submitted by Mary Nagakawa, Marketing Coordinator



This year marked our third time expanding the Akimatsuri Fall Festival onto the street in front of the ESGVJCC, and we're proud to see how much the event has grown. As our longest-running festival, it now reaches well beyond ESGVJCC members and our West Covina neighbors, drawing in a broader community to celebrate with us.

The festival kicked off at noon, just in time for lunch, with a wide variety of delicious food options from this year's lineup of vendors. The day began with a special appearance by Mayor Tony Wu and Councilman Ollie Cantos of the City of West Covina, who recognized the ESGVJCC as a culturally significant part of the community. Their words were deeply meaningful and set a celebratory tone for the day.

Following the presentation, the entertainment began with performances by ESGVJCC programs and ended with Cal Poly's Taiko Group. The day's events were emceed by our Mistress of Ceremonies and 2025 ESGVJCC Queen, Mia Takatsuka, who helped keep the schedule running smoothly.

We are sincerely grateful to the City of West Covina for co-hosting this event with us, and especially to Mayor Wu and Councilman Cantos for taking the time to attend and show their support. Their presence reinforced the strong partnership between our center and the local community.

Many thanks go out to the many people who made this event possible. To our sponsors, volunteers, vendors, and performers—

thank you for your hard work. Special thanks to the West Covina Police and Fire Departments for ensuring the safety of all attendees throughout the day.

And of course, thank you to everyone who joined us for a wonderful Saturday afternoon. Whether you came with friends or family, supported the food and activity booths, or stayed to enjoy the performances, your presence plays an essential role in sustaining the ESGVJCC, our programs, and the local small businesses and community resources that make events like this possible.

We'd also like to recognize our Title Sponsor and Momiji Sponsors for their generous support of this year's festival.

Title Sponsors - \$2,500

Phillip Komai

Momiji Sponsors - \$1,000

Foothill Transit

Japanese American Community Credit Union

We hope you had a beautiful day and left with a deeper appreciation for Japanese American culture and the joy of welcoming a new season. Be sure to check our Facebook page for photos from the festival! ■

HOW CAN YOU SUPPORT THE ESGVJCC?

Any and every donation is greatly appreciated. There are a variety of ways to continue supporting the ESGVJCC:

CELLPHONES

The ESGVJCC is part of a national program designed to remove used cell phones from the country's environment while directly benefiting our organization. So now you can donate your old cell phones and the ESGVJCC will receive \$\$.

OLD CAR

Your car doesn't even have to run! The towing company will come to you; plus, it can be a great tax-incentive for you. Call the ESGVJCC for more information.

WHILE YOU WORK

If your company is affiliated with United Way, you can choose to designate your donation to go to the ESGVJCC. The ESGVJCC's United Way Account # is 1745959. Don't forget to check with your company about matching donations - Some companies like Johnson & Johnson Family of Companies donate 2 to 1!

WHILE YOU USE EBAY

If you sell many items on eBay, you can choose to donate anywhere from 10% to 100% of your final sale to the ESGVJCC! Look for "eBay Giving Works" in the Sell Your Item form "Select a new nonprofit" type "East San Gabriel Valley Japanese Community Center" in the "Nonprofit Name or Keyword" field Then select the percentage 10% - 100%!

VENMO

You can make donations to the ESGVJCC via the VenmoApp. Just search for the East San Gabriel Valley Japanese C in the app! Download the Venmo app in the Apple App Store or Google Play. Set up your account, add your payment method and you are all ready to go!

UNITED WAY

If your company is affiliated with United Way, you can choose to designate your donation to go to the East San Gabriel Valley Japanese Community Center. Our United Way Account # is 1745959.

WISH LIST

By donating items from our Wish List, you help us reduce our expenses. This allows us to provide more much needed funding for our Programs! To see what office, maintenance, and other supplies you can donate, please visit esgvjcc.org/donate.

DONATIONS

OPERATING FUND

Denise Akune	\$50
Russell & Marlys Kuruma	\$300
Taka Nakamura	\$200
Barbara Shiota	\$2,500
Kazuo & Kary Yoshimizu	\$100

Kusuda Scholarship

Barbara Shiota	\$500
----------------	-------

Kusuda Scholarship

Irene Miyake	\$200
--------------	-------

2025

KIBOU LEGACY CIRCLE



Tim & Sandy Itatani

Mae & Ken Kimura

Phillip Komai

Glenn & Jean Nakatani

Grace Richardson

Barbara Shiota

George Sugimoto

In Japanese, the word Kibou means Hope. If one man and his hopes for the community to build what the ESGVJCC is today, imagine what we as a community could do for future generations. The Kibou Legacy Circle includes donors who give \$5,000 or more annually. These donors give back to help ensure that the Japanese American culture and traditions continue through the various ESGVJCC programs and classes offered here.

For more information on the Kibou Legacy Circle, contact Pearl Omiya at (626) 960-2566 or pomiya@esgvjcc.org. ■

STAY CONNECTED WITH US! @ESGVJCC



2025 BASKETBALL CLINICS

NOV 24
9AM-3PM



NOV 25
9AM-3PM

4TH-8TH GRADE
MON, NOV 24
9AM-3PM

MEMBERS - \$60/PLAYER
NON-MEMBERS - \$80/PLAYER
SNACKS & LUNCH INCLUDED

K-3RD GRADE
TUE, NOV 25
9AM-3PM

MEMBERS - \$60/PLAYER
NON-MEMBERS - \$80/PLAYER
SNACKS & LUNCH INCLUDED



REGISTER ON [ESGVJCC.ORG/YOUTH-PROGRAMS](https://esgvjcc.org/youth-programs)
CONTACT PROGRAM DIRECTOR MELISSA KOZONO
AT [MKOZONO@ESGVJCC.ORG](mailto:mkozono@esgvjcc.org) FOR ANY QUESTIONS.



WINTER CAMP CHIBIKKO



This year's theme is Oshogatsu (Japanese New Year) and the Year of the Horse!

Monday, December 29 & Tuesday, December 30
at the ESGVJCC

Register by November 14 on esgvjcc.org/youth-programs/!

Email Program Director Melissa Kozono at mkozono@esgvjcc.org for any questions.

WHEN AND WHY ARE FASTER GRID PROTECTION SETTINGS IMPLEMENTED?

Equipment enabled with faster grid protection settings can automatically turn off power much faster than during normal operating conditions.

This difference in timing is critical to reducing ignition potential during a fault on our system in high fire risk areas. If these faults, and the resulting outages, were to occur during elevated fire conditions, the faster grid protection settings will help reduce ignition risk.

SCE's ongoing grid hardening work, including installation of covered conductor, as well as coordination of protection devices such as sectionalizing devices and fuses, will help minimize the number and impact of outages. During elevated fire conditions, our crews thoroughly inspect and patrol affected lines for damage after any outage before safely restoring power which could lead to longer outage times. However, this is done to ensure public safety and minimize wildfire risk for our communities during those heightened weather conditions.



WHEN DID SCE START USING FASTER GRID PROTECTION SETTINGS AND WHAT CHANGES ARE TAKING PLACE?

SCE began using faster grid protection settings in high fire risk areas in 2018 as part of a suite of wildfire mitigation measures to reduce ignition risk. About 85% of our 1,070 circuits in high fire risk areas have circuit breaker relays or remote-controlled automatic reclosers with this faster capability. We plan to deploy this capability to nearly all our circuits in high fire risk areas by the end of 2023.

In 2022, we have refined our faster grid protection settings strategy by adjusting the sensitivity and responsiveness of the protective devices. On a select number of circuits in our highest fire risk areas, we are piloting settings that provide even faster responsiveness to assess additional ignition risk reduction benefits.

ARE OUTAGE ALERTS PROVIDED FOR OUTAGES RELATED TO FASTER GRID PROTECTION SETTINGS?

Outages that occur due to faster grid protection settings are not planned. They occur automatically when a fault is detected on a power line or equipment. These are repair outages and customers will receive repair outage alerts and updates through their preferred channel.



Customers can:

- Sign up for outage alerts at sce.com/outagealerts
- Look up outage details at sce.com/outagemap
- Learn more about customer resources and programs at sce.com/customerresources

GENKI LIVING — WORKSHOPS —

GARDENING

JANUARY 31, 2026

Tanaka Farms

COOKING
MARCH 2026

WALKING
COMING SOON

CRAFTING
COMING SOON

For more information on Genki Living Workshops, scan the QR code or go to keiro.org/glw.





EAST SAN GABRIEL VALLEY
JAPANESE COMMUNITY CENTER **ESGVJCC**

1203 West Puente Avenue | West Covina, CA 91790
PO Box 282 | West Covina, CA 91793-0282

Non-Profit Organization
U.S. POSTAGE PAID
PERMIT No. 38
Covina, CA 91722

Address Service Requested
DATED MATERIAL

BRIDGING CULTURE, FAMILY, & COMMUNITY

ESGVJCC

Mission Statement | The East San Gabriel Valley Japanese Community Center is a not for profit organization dedicated to foster and preserve the cultural heritage unique to Japanese American ancestry; and to serve the community through social services, artistic, recreational, and educational programs.

ESGVJCC Office

P 626 960 2566
F 626 960 0866
W esgvjcc.org
E info@esgvjcc.org
H M-F 9 am - 5 pm

Pearl Omiya

Executive Director
E pomiya@esgvjcc.org

Tina Asano

Executive Assistant
E tasano@esgvjcc.org

Scott Kawachi

Office Manager
E skawachi@esgvjcc.org

Melissa Kozono

Program Director
E mkozono@esgvjcc.org

Mary Nagakawa

Marketing Coordinator
E mnagakawa@esgvjcc.org

Katrina Que

Events/Programs
Coordinator
E katrinaq@esgvjcc.org

Bryce Middo

Events/Programs
Coordinator
E brycem@esgvjcc.org